



CINQUIÈME
KRUNGTHEP KREETHA

PRIVATE POOL VILLA ONLY 16 UNITS

THE FIFTH DIMENSION OF PRIVACY LIVING

THE PRIVACY OF SPACE

Generous volumes and intelligent architecture craft a sanctuary unseen yet deeply felt—where space itself becomes the essence of privacy.

THE PRIVACY OF FREEDOM

True freedom begins with absolute privacy—granting you the rare luxury to live, create, and simply be, entirely on your own terms.

THE PRIVACY OF THE SENSES

Through light, sound, and texture, we shield you from the city's noise—creating profound calm where your thoughts can breathe.

THE PRIVACY OF THE SOUL

A sanctuary so tranquil it restores the spirit—offering the deepest luxury: the quiet to return to your true self.

THE PRIVACY OF CONTINUITY

Enduring design and timeless elegance preserve not only your peace, but your legacy—ensuring meaning for generations to come.
Five dimensions, one timeless sanctuary of privacy.



PROJECT INFORMATION

A COLLECTION OF 16 PRIVATE RESIDENCES



Developer	:	Asset Five Development
Location	:	Srinakarin – Romklao Rd. (New Krungthep Kreetha)
Project Type	:	3-Storey Pool Villa with Private Elevator
Total Units	:	16 Exclusive Residences
Total Area	:	9-3-25.9 Rai
Facilities	:	
Cinquième Park	:	Signature green space for serene living
Playground & Treehouse	:	Family-inspired leisure zone
Clubhouse	:	Elegant Lobby, Swimming Pool, Fitness Studio, and Private Meeting Lounge

*Architecture is a visual art, and
the buildings speak for themselves*
Julia Morgan



MAJESTÉ

WHERE GRANDEUR
AND GRACE RESIDE

Area : 805 sq.m.
Room : 5 Bedroom
: 6 Bathroom
: 1 Maid room
Parking : 5 Car parks



FLOOR 1



1. Car Parking
2. Formal Living Area
3. Powder Room
4. Family Living Area
5. Dining Area
6. Pantry
7. Private Lift
8. Bedroom (1)
9. Thai Kitchen
10. Maid Plaza
11. Storage

FLOOR 2



1. Freedom Function
2. Bedroom (2)
3. Bedroom (3)

FLOOR 3



1. Private Collection Room
2. Master Bedroom (4)
3. Junior Master Bedroom (5)

*Luxury today is not about having, but
about being, about freedom, time, and the
possibility to live differently*

Bjarke Ingels



AN INTERIOR WORLD OF CALM

Unfolding across 805 square meters, MAJESTÉ is a testament to spatial luxury, a calm expanse designed for life's grandest moments and quietest retreats. Five bedrooms and six bathrooms offer a haven for both family connection and personal reflection. Its modern heritage facade gives way to interiors bathed in natural light, creating a home that is at once commanding in presence and comforting in its embrace.



Computer Generated Image



Computer Generated Image

Step into a world of quiet sophistication, where every detail whispers calm. High ceilings reach for the light, while timeless finishes create a canvas for serene daily living. From peaceful private lounges to spaces designed for joyful gatherings, MAJESTE is a stage for life's most beautiful moments, wrapped in comfort and enduring grace.

MAISON PRIVÉE

A HEAVEN OF REFINED PRIVACY

Area : 655 sq.m.
Room : 4 Bedroom
: 5 Bathroom
: 1 Maid room
Parking : 4 Car parks

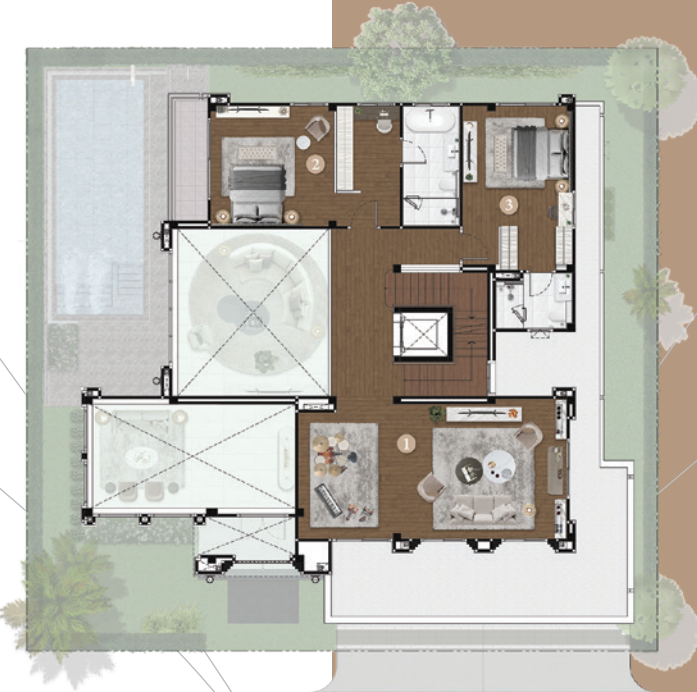


FLOOR 1



1. Car Parking
2. Formal Living Area
3. Family Living Area
4. Powder Room
5. Private Lift
6. Dining Area
7. Pantry
8. Bedroom (1)
9. Thai Kitchen
10. Maid Plaza
11. Storage

FLOOR 2



1. Freedom Function
2. Bedroom (2)
3. Bedroom (3)

FLOOR 3



1. Penthouse Master Bedroom (4)
2. Private Collection Room



THE SOUL OF A TIMELESS HOME

Within its 655 square meters, MAISON PRIVEE unfolds as a modern sanctuary, a home crafted for the art of intimate living. Four bedrooms and five bathrooms are composed in a thoughtful rhythm, balancing serene personal space with warm togetherness. Life flows seamlessly from sunlit interiors to the tranquil private pool, defining a new elegance—one measured not in excess, but in the quiet perfection of life's most cherished details.



*Computer Generated Image



The interiors of MAISON PRIVÉE breathe a quiet sophistication into every corner. A gentle palette of natural textures and soft tones creates an atmosphere of deep and abiding comfort. The spacious layout moves with a gentle, intuitive flow, inviting moments of connection and corners for quiet contemplation, crafting a home that is both beautifully refined and mindfully designed.

*Architecture is not about form.
It's about life. I think that is what
ultimately drives architecture.*

David Chipperfield

MAP



WELLNESS

- Samitivej Srinakarin Hospital
- Ramkhamhaeng Hospital

LIFESTYLE

- Marketplace Krungthepkreetha
- Nirvana Porch
- The Mall Ramkhamhaeng

- The Mall Bangkok
- The Nine Center Rama 9
- Little Walk
- The Paseo Town

- Krungthep Kreetha Golf Course
- Unico Grande Golf Course

EDUCATION

- Brighton College Bangkok
- Wellington College INT School
- ABAC Huamak Campus

- NIDA
- ASCOT INTL School Bangkok



*Computer Generated Image

CALL 098-818-9941

WWW.CINQ-UIEME.COM

Cinquieme Krungthep Kreetha by Asset Five Development Public Company Limited represented by Mr. Supachoke Panchasarp as authorized managing director, residing head office at 199 S OASIS Building, 12th Floor, Unit 1210, 1211, 1212 Vibhavadi-Rangsit Rd., Chompol, Chatuchak, Bangkok, Thailand 10900. The registered capital is 300,000,000 Baht. The project located at Srinakarin romkloa Road, Saphan Sung, Saphan Sung District, Bangkok provides 16 units of 3 storey single detached house ; Title deed no. 29057, no. 29058 with land area 9-3-25.9 Rais. The estimated green area is 158.8 sq.wa. The committees of Land Development is under permission, the project is mortgaged with Krung Thai Bank Public Ltd., The project is under construction and shall approximately be finished in Q4 2027. The project hereby reserves the right to change or modify the terms, conditions, plans, materials and specifications at any time without prior notice.



ASSET FIVE DEVELOPMENT COMPANY LIMITED

199 S OASIS Building, 12th Floor, Unit 1210, 1211, 1212,
Vibhavadi Rangsit Rd., Chom Phon, Chatuchak, Bangkok 10900